



FIELD EDGE DRIVE, BARROW UPON SOAR, LOUGHBOROUGH

: £235,000





Tucked away within a popular residential setting on the edge of Loughborough, this beautifully presented two-bedroom end-terrace home combines modern living with a warm sense of character, making it an ideal choice for first-time buyers, professionals or those looking to downsize without compromise.



The accommodation has been thoughtfully maintained throughout, beginning with a welcoming entrance hall that provides access to a convenient ground floor WC and staircase to the first floor. Positioned to the front of the home, the contemporary fitted kitchen offers a sleek finish with integrated oven and hob, ample preparation space and room for additional appliances.

To the rear, the spacious lounge enjoys an abundance of natural light and creates the perfect setting for both everyday living and entertaining. French doors open directly onto the garden, seamlessly connecting indoor and outdoor spaces.

Upstairs, two generous double bedrooms are served by a modern family bathroom complete with shower over bath. The principal bedroom enjoys a pleasant rear aspect, while the second double bedroom benefits from useful built-in storage.

Outside, the property continues to impress. The enclosed rear garden features a patio and lawned area, ideal for summer gatherings, whilst a versatile summer house offers excellent potential as a home gym, office or creative studio. A front garden further enhances the home's kerb appeal.





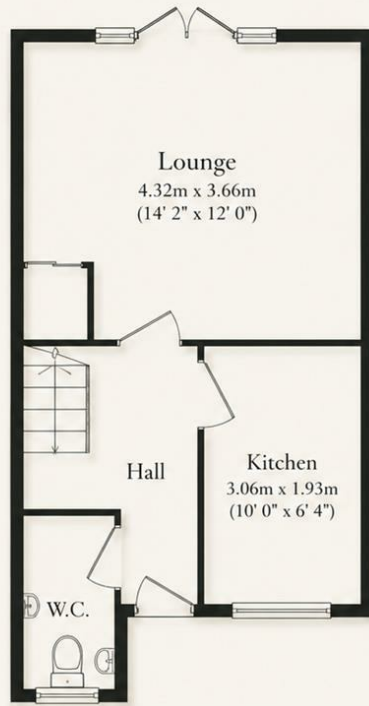


Location

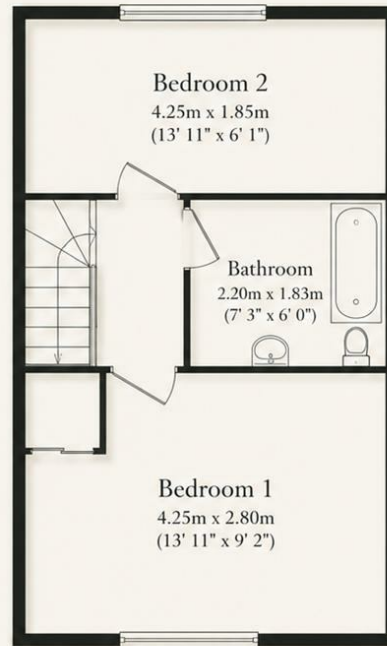
Field Edge Drive enjoys a desirable position on the outskirts of Loughborough, offering excellent access to everyday amenities, highly regarded local schools and a range of leisure facilities. Loughborough town centre and the renowned university are both within easy reach, whilst superb transport connections via the A6, A50, M1 and Loughborough railway station make commuting to Leicester, Nottingham, Derby and London straightforward.



Key Features:



GROUND FLOOR



FIRST FLOOR

TOTAL FLOOR AREA: 59.2 m² (637 sq.ft.) approx.

Whilst every attempt has been made to ensure the accuracy of the floorplan contained here, measurements of doors, windows, rooms and any other items are approximate and no responsibility is taken for any error, omission or mis-statement. This plan is for illustrative purposes only and should be used as such by any prospective purchaser. The services, systems and appliances shown have not been tested and no guarantee as to their operability or efficiency can be given.

REZIDE
LUXURY HOME MARKETING



REZIDE



2



1



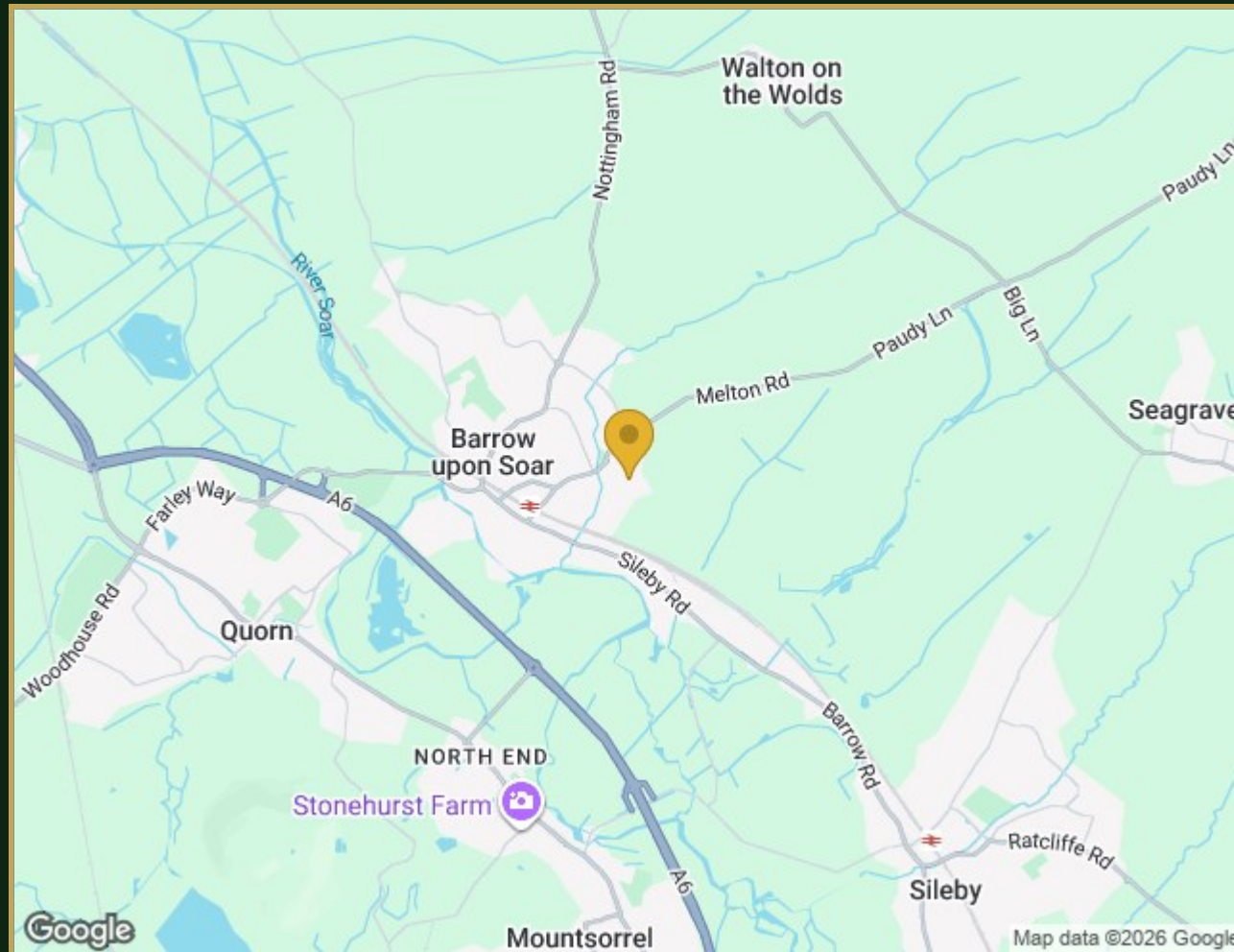
1



637.00 sq ft

Energy Efficiency Rating	Current	Potential	Environmental Impact (CO ₂) Rating	Current	Potential
Very energy efficient - lower running costs			Very environmentally friendly - lower CO ₂ emissions		
(92 plus) A			(82 plus) A		
(81-91) B			(81-91) B		
(69-80) C			(69-80) C		
(55-68) D			(55-68) D		
(39-54) E			(39-54) E		
(21-38) F			(21-38) F		
(1-20) G			(1-20) G		
Not energy efficient - higher running costs			Not environmentally friendly - higher CO ₂ emissions		
England & Wales	EU Directive 2002/91/EC		England & Wales	EU Directive 2002/91/EC	

Property Location



14 Field Edge Drive, Barrow Upon Soar, Loughborough, LE12 8ZF